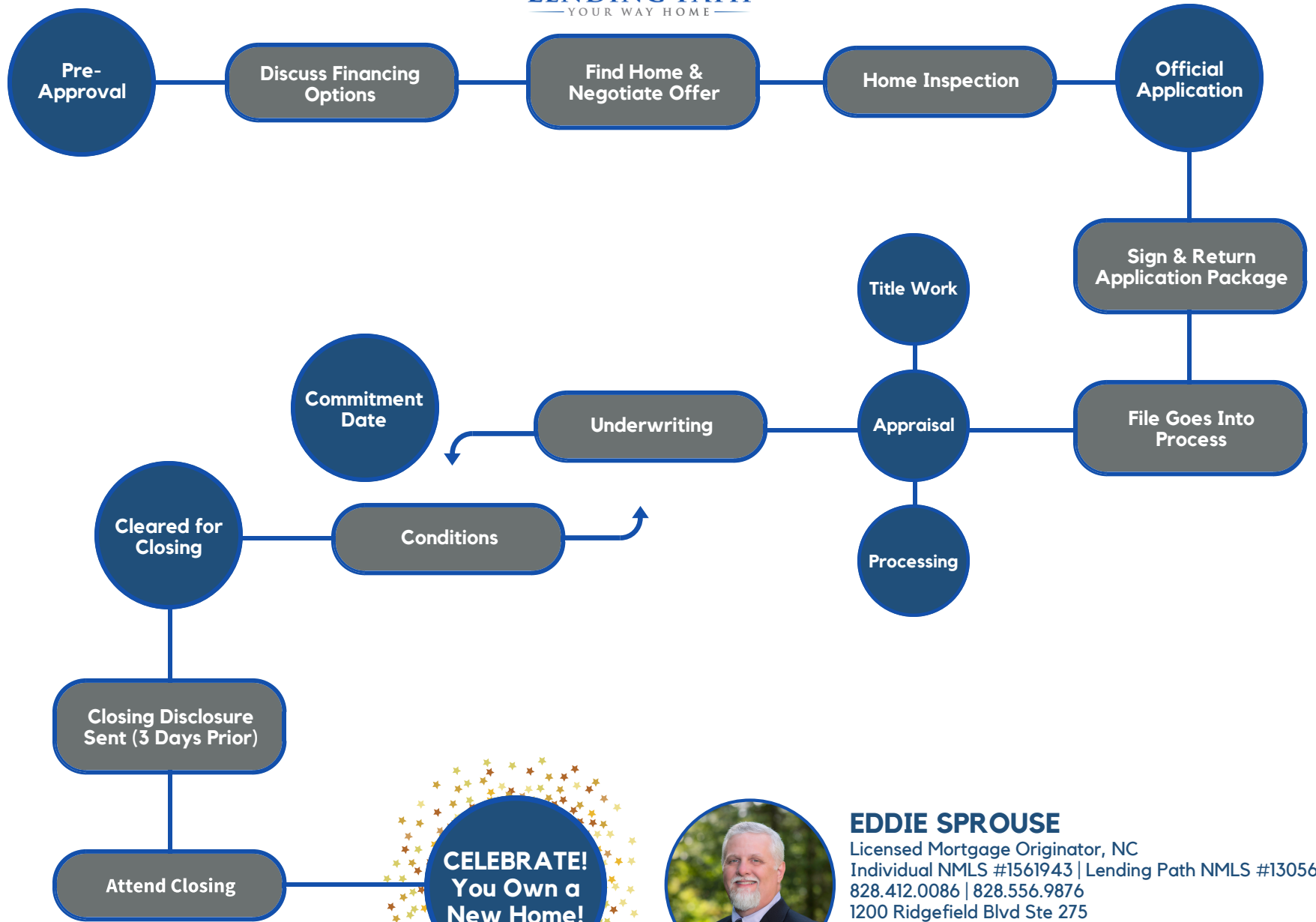


# LOAN PROCESS FLOW CHART



Effective 5.18 | "Information subject to change without notice. This is not an offer for extension of credit or a commitment to lend." www.nmlsconsumeraccess.org Success Mortgage Partners, Inc. is not affiliated with and does not act on behalf of or at the direction of HUD/FHA, or the federal government.



**EDDIE SPROUSE**  
Licensed Mortgage Originator, NC  
Individual NMLS #1561943 | Lending Path NMLS #130562  
828.412.0086 | 828.556.9876  
1200 Ridgefield Blvd Ste 275  
Asheville, NC 28806  
[www.eddiesprouse.com](http://www.eddiesprouse.com)

